

UMQULU WOLWAZI OLUWUMGOGODLA ISICELO ESIDIDIYELE SOKUGUNYAZWA KWANGOKWEMVELO NESEMVUME YOKUSETSHENZISWA KWAMANZI

ISIZINDA SOKUHLANZA AMANZI ANGCOLILE KANYE NESIZINDA OKUL AHLWA KUSO
ESINGESEMISEBENZI YEMAQUASA EAST (ENGASEMPUMALANGA), KUMASIPALA
WENDAWO UMKHONDO, ESIFUNDENI IGERT SIBANDE, ESIFUNDAZWENI SASE
MPUMALANGA.

Ihloso yalomqulu

Ihloso yalomqulu ngukunikezela ngolwazi eMaqenjini Abathintekayo Nabafisa Ukubambiqhaza (I&APs) olumayelana neprojecti ehlongozwayo kanye nokwethulwa nokucacisa ngemigudu yesiCelo Sokusetshenziswa Kwamanzi (WULA) kanye nowoCwaningo Lokungenzeka Envelweni (EIA). LoMqulu Owumgogodla Wolwazi uhlose futhi ngochaza ngomgudu wokubambiqhaza komphakathi oshicilelwe nguMthetho Kazwelonke Wokuphathwa Kwemvelo, 1998 (uMthetho 107 ka1998) (NEMA) bese umema amal&APs ukuba aphawule ngezinqinamba nezimvo zawo ezimayelana naleprojecti.

Isethulo kanye Nomgogodla weProjecti

I-Kangra Coal (Pty) Ltd (Kangra) inemayini yamalahlle evele ikhona esendaweni yase Driefontein, eduze kwasePiet Retief esiFundazweni saseMpumalanga. Imayini ikuMasipala uMkhondo ongaphansi kukaMasipala weSifunda iGert Sibande. Imisebenzi yeMaquasa East (MQE) ixuba ukumbiwa okuvulekile phezulu kanye nemisebenzi yokumba kuguduzwe emathunjini omhlaba ngaphansi kweLungelo Lokumbiwa Kwezimbiwa elingu (MP)30/5/1/2/2/133MR. I-Kangra ihlongoza ukwakha isizinda sokuhlaza amanzi kanye nendawo okulahlwa kuyo udoti odidiyelwe endaweni yemisebenzi yeMaquasa East/Esempumalanga. (Bheka Umboniso 1)

I-GCS Water and Environment (Pty) Ltd iqashiwe ukuze bezobhekana nemigudu edidiyele

yokugunyazwa kwangokwemvelo (IEA) kanye nomgudu wesicelo semvume yokusebenzisa amanzi (WULA) kanye noMgudu Ohambisana Nokubambiqhaza Komphakathi (PPP) odingekayo kuleprojecti ehlongozwayo ukuze kuzohlangabezwana nezimfuno zeNEMA, ezoMthetho Kazwelonke Wezamanzi (NWA) (Umthetho 36 ka1998, njengoba uchitshiyelwe), kanye futhi noMthetho Oxhasa Ukuphathwa Kwemvelo (SEMA's).

Lomqulu owumgogodla wolwazi (BID) unikeza imininingwane ewumsuka mayelana nentuthuko ehlongozwayo, imisebenzi ehambisana nayo eyenziwayo ukuze kuzolandeleda imigudu yokugunyaza edingakalayo, futhi iba ngumqulu ongumsuka wawo wonke amal&APs.

Incazelo Yeprojecti

Inhloso yalesisizinda esihlongozwayo sokuhlaza amanzi (WWTP) ukuba sihlanze amanzi akhishiwe kanye namanye anukubezekile/angcolile atholakala lapha kusetshenzwa khona. I-MQE ikhipha amanzi acwebile alapha kusetshenzwa khona ngaphansi komhlaba ngezanga elingu 1 800m³/ngosuku. Le WWTP izosebenzisa indlela yokuhlaza amanzi ngendlela eqondile njengalokhu kwatholakala ukuthi indlela yokuwahlaza ngokuzenzakalela ayenzeki ngenxa yendawo akuyona lamanzi adinga ukukhishwa, izinga lokugeleza eliphezulu kanye nobumtoti bamanzi adedelwayo. Okusasawotshana okuqhamuka kwiWWTP kuzodudulwa kuhambe ngepayipi kugcinwe endaweni entsha eyidamu lokulawula ukugcola okusasawotshana (PCD).

Isizinda esihlongozwayo sokulahla ngokuhlanganyela singaphansi kwendawo eyabe ivele igunyaziwe yokulahla lamanzi anukubezekile (MDARDLE Ref: 17/2/3/GS-240).

Ngenxa yalokhu kuguquka kwindlela okudingakala ukuba kusetshenzwe ngayo, kanye nokuphela kwesikhathi semvume yangaphambilini, sekunesingo sokuthi kutholakale imvume entsha yesizinda esididiyele okulahlwa kusona.

Isizinda esididiyele okulahlwa kuso sizobhekela udoti okhiqizeke esizindeneni sokuhlunga, udaka olomile kanye nosawoti abangaqhamuka kwiWWTP.

Ukudwetshwa kwesizinda esididiyele okulahlwa kuso kuzofana nesizinda esasigunyaziwe sokulahla udoti: okuyizizinda ezihlukene kathathu ezakheka eceleni kwentaba obungako baso kungamahektha angu65. Indlela yokuthuthukisa ngezigaba, esikhathini esiyiminyaka engu20 iyona ecatsangwayo: Isigaba 1 umthamo weminyaka engu7; Isigaba 2 umthamo weminyaka engu7 bese Isigaba 3 kube oweminyaka engu6. (Bheke esiGatshaneni 2)

Indawo Yeprojecti

Isifundazwe:	Mpumalanga
Masipala wesifunda:	Gert Sibande
Umasipala Wendawo:	uMkhondo
Ubungako:	68 wamahektha
Ukuklanywa:	Izimbiwa/mayini
Ubunikazi:	Kangra Coal (Pty) Ltd
Ukusetshenziswa kwamanje:	Imayini
Idolobha eliseduze:	Piet Retief ye Rem yePulazi Rooikop 18 HT
Ingxenye Yepulazi ethintekayo:	Indawo ye Rem yePulazi i Maquasa 19HT iPulazi Roodekraal 21 HT.

Umfaki Sicelo

Umfaki Sicelo:	Kangra Coal (Pty) Ltd
Omumele:	Niketiwe Dlamini
Ikheli:	Farm Driefontein, Saul Mkhizeville, Mkhondo P.O. Box 745, Piet Retief, 2380

Izimo Zokulawula

UMthetho Kazwelonke Wokuphathwa Kwemvelo, 1998 (uMthetho 107 ka1998) (NEMA)

Isigaba 24 se NEMA sidinga ukuthi imisebenzi ethile esohlwini, engaba nemithelela emvelweni, ethinta ukudingakala kokugunyazwa kwangokwemvelo kutholakale kwiziphathimandla ezifanele ngaphambi kokuba kuqalwe nokwenza leyo misebenzi. Imisebenzi ekanjena ifakwe ohlwini ngaphansi kweMigomo Yesaziso Esisohlwini 1 GNR 324, Isaziso Sohlu 2 GNR 325 kanye Nesaziso Sohlu 3 GNR 327 (njengoba kwachitshiyelwa ngo2014) ye NEMA (njengoba ichiyelwe).

Uhla Lwemisebenzi Eqondene nalesisicelo yilena:

#	Incazelo Yomsebenzi
Uhla Lwesaziso 1 (GN R327)	
9	Ukwakhiwa kwamapayipi anobukhulu obungaphezu kuka-0.36m kanye nokuphuma kwamanzi angaphezu kuka-120l/s, ukuze kuhanjise amanzi/amanzi ezikhukhula endaweni yokulahla ndawonye.
10	Ukwakhiwa kwamapayipi aobukhulu obungaphezu kuka-0.36m kanye nokuphuma kwamanzi angaphezu kuka-120l/s, ukuze kuhlinzekwe amanzi enqubo/ukungcola/ukubuyisela amanzi noma ukuhlukaniswa kwendle endaweni yokulahla kanyekanye kanye nokukhipha ipayipi elisuka endaweni yokuhlaza amanzi angcolile ukuya. i-Heyshope Dam.
19	Ukwakhiwa kwawo womabili amaprojecti kungase kubangele ukugcwaliswa/ukufakwa kanye nokususwa/ukususwa kwempahla engaphezu kuka-10m ³ emseleni wamanzi.
24	Kudingeka imigwaqo emisha eyahlukene engu-16m ububanzi ku-CDF entsha ehlongozwayo, kanti ubude bale migwaqo buzodlula i-1km ubude.
25	Ukwakhiwa kwesikhungo sokuhlaza amanzi angcolile esinamandla okuphuma ku-4 500m ³ ngosuku.
27	Ubungako bomsebenzi ohlongozwayo bungalinganiselwa ku65ha indawo iyonke, ngakho-ke, kuzocatshwa izihlahla/izimili zendabuko ukuze kuzokwakhiwa isihlanzamanzi, okusasawotshana kanye nesizinda esididiyele okuzolahlwa kusona esilinganiselwa ku68 wamahektha, okungaphezulu ngehektha elilodwa kwalokho okubekiwe.

Uhla Lwesaziso 2 (GN R325)	
6	Ukwakhiwa nokusebenza kwesizinda sokuhlaza amanzi, osawotshana bePCD kanye nesizinda esididiyele okulahlwa kuso kudinga iMvume Yokusetshenziswa Kwamanzi ngenxa yokusetshenziswa kwamanzi okuthintekayo mayelana neSigaba 21 se NWA.
15	Ubungako bendawo yomsebenzi ohlongozwayo kulinganiselwa kumahektha angu68, ngakho-ke, ukususwa kwezihlahla zendabuko zisuselwa ukwakha iprojecti ehlongozwayo kungaba ngamahektha angu68 okuyinto engaphezulu kwamahektha abekiwe angu 20.
Uhla lwesaziso 3 (GN R324)	
12	Iprojecti ehlongozwayo ingena ngaphakathi kweNdawo Yemvelo Ebucayi, ngakho-ke, ukususwa okungabakhona kwezihlahla zendabuko ukuze kwakhiwe iprojecti kuyinto ezodlula ubungako obubekiwe obungu300m ² .
14	Iprojecti ehlongozwayo iwela endaweni ye-CBA kanye ne-NPAES Focus. Intuthuko ingena emiseleni eyahlukene yamanzi futhi ngenxa yalokho izakhiwo ezihlongozwayo ezizokwakhiwa zizodlula umkhawulo ongu-10m ² .

Ukuphathwa Kwemvelo Kuzwelonke: uMthetho Wodoti, 2008 (uThemtho 59 ka 2008) NEMWA)

ISigaba 20 seNEMWA sidinga ukuthi imisebenzi ethile yokulawulwa kodoti, sidinga ilayisense/imvume kwiziphathimandla ezifanele ngaphambi kokuba kuqalwe nalemisebenzi. Lemisebenzi yokulawulwa kodoti ifakwe ngaphansi kweMigomo GNR 921 (njengoba ichtshiyelwe).

Imisebenzi eqondene noKuphathwa koDoti kulesisicelo yilena:

#	Incazelo Yomsebenzi
Category B	
7	Isizinda esihlongozwayo okulahlwa kuso siqukethe "ukulahlwa endawenu kwanoma ngongakanani udoti onobungozi".
10	Iprojecti ehlongozwayo iqukethe ukwakhiwa kwesizinda somsebenzi olawulwa yimigomo.
11	Iprojecti ehlongozwayo iqukethe "ukunqwabelwa kwalokho okuyizinsalela".

Ngokubheka kanzulu lokhu okungenhla, kumele kuthathwe imigudu yokuQoqwa Kwezimvo kanye nowoCwaningo Lokungenzeka Envelweni.

UMthetho Kazwelonke Wezamanzi, 1998 (uMthetho 36 ka1998) (NWA)

Kumele kwenziwe futhi kuthunyelwe iSicelo Semvume Yokusetshenziswa Kwamanzi siye eMnyangweni WezaManzi kanye Nendle (DWS) ukuze kuzoqinisekiswa ukuba semthethweni kokusetshenziswa kwamanzi kwaleprojecti ehlongozwayo. ISicelo Semvume Yokusetshenziswa Kwamanzi izokwenziwa kanyekanye nemigudu ye EIA kanye neye EMP mayelana nanoma yimuphi umsebenzi ohambisana neSigaba 21 se NWA.

Ukusetshenziswa kwamanzi kuthintekile njengengxenywe yeprojecti edinga ukugunyazwa ngokulandela iSigaba 21 seNWA:

Isigaba 21:	
(c)	Ukuvimba noma ukuguqula ukugeleza kwamanzi emfuleni/endaweni yamanzi
(f)	Ukudedela udoti noma amanzi aqukethe udoti
(g)	Ukulahla amanzi ngendlela engaba nomthelela oyingozi emfuleni noma endaweni yamanzi
(i)	Ukuguqula umfula phakathi, osebeni, ukugeleza kwawo noma ubunjalo bawo

Umthetho Wezinsiza Zamagugu Kazwelonke, 1999 (uMthetho wama-25 ka-1999) (NHRA)

Ukuvikelwa nokuphathwa kwemithombo yamagugu yaseNingizimu Afrika kulawulwa yi-NHRA. Izici ezibalulekile ngokomlando, njengamathuna, imivubukulo kanye nezimpawu ezibalulekile ngokwamasiko, izikhala kanye nezindawo zivikelwe yi-NHRA. Imvume evela ku-Ejensi Yezinsiza Zamagugu YaseNingizimu Afrika (i-SAHRA) iyadingeka ngokweSigaba 38 se-NHRA ezinhlotsheni ezithile zentuthuko, eziqalwa yimisebenzi ehlongozwayo. Isicelo mayelana nalokhu sizofakwa ngesikhathi senqubo ye-EIA.

Uhlaka Lomgudu woCwango Lokungenzeka Emvelweni

I-EIA iyithuluzi oluwumthetho elisetshenziswa ukuqikelela ukuthi imithelela engaba semvelweni engahle yenzeke ngenxa yentuthuko ehlongozwayo iyagwemeka noma iyancishiswa, uma kwenzeka igunyazwa intuthuko. Imvelo ixuba uhlaka lwabantu, lomnotho nolwemvelo yendalo okumele iEIA ilucubungule ngendlela elinganayo.

Umgudu weEIA uhlukeni izigaba ezimbili, iSigaba Sokuqoqa Izimvo kanye neSigaba Socwango Lwemithelela.

Isigaba Sokuqoqa Izimvo:

Isigaba Sokuqoqa Izimvo sihlose uku:

- Phenya nokuqoqa ulwazi mayelana nesiza esihlongozwayo, ukusungula ukuqonda ngendawo
- Ukusungula ukuthi ngabe imisebenzi yentuthuko ehlongozwayo ingahle ibe namiphi imithelela emvelweni
- Ukuqagula amalAPs kanye neziphathimandla ezifanele ngokuthi kwenziwe uMgudu Wokubambiqhaza Komphakathi
- Ukuqagula imithelela yemvelo engahle ibe khona ngokuthi kuphenywe kanye ne PPP
- Ukuchaza iprojecti ehlongozwayo kanye neminye Imigudu Engandelwa

Isigaba Socwango Lwemithelela:

Kulesisigaba, zonke izingqinamba kanye nemithelela kanjalo neminye imigudu ehlongozwayo eqagulwe eSigabeni Sokuqoqa Ulwazi ziyacwangingwa bese zibekwa ngokwezinga lokubaluleka kwazo. Lapho kunesidingo khona, kuyaye kwenziwe izincomo ezinciphisa noma zixazulule imithelela emibi engaba khona, noma kwenziwe ngcono imithelela emihle engaba khona.

Kuyohlangukiswa Uhlelo Lokuphathwa Kwemvelo oluyobe selugagula izimo ezifanele zemvelo zamayelana nezigaba zokwakhiwa, zokusebenza kanye nezokubhidliza kweprojecti. Kanti ngasohlangothini lwesigaba Sokuqoqa Ulwazi, iPPP iyinxenye eqavile yeSigaba Socwango.

Umgudu Wokubambiqhaza Komphakathi

Umgudu Wokubambiqhaza Komphakathi (PPP) uhlose ukwazisa inqwaba yama I&APs (*nanoma yimuphi umuntu noma inhlango enothando oluqondile, lwebhizinisi, lwezimali, lwalowomuntu kanye nolunye uthando, noma lowo othinteka ngqo noma ngandlelana thizeni, ngenxa yeprojecti ehlongozwayo*) ngentuthuko ehlongozwayo kanye nomgudu wemvelo ozolandelwa. Uyithuluzi elivumela umphakathi ukuba unikezelane ngolwazi nokuthi ubeke izimvo zawo nalokho okubathintayo ngentuthuko ehlongozwayo eyenziwela iEIA. I-PPP isiza ekuqaguleni izingqinamba ezingaba khona nalokho okubathintayo okudinga ukuba kubhekanwe nakho ekucutshungulweni kwemithelela ngokuthi kuqhakambise ulwazi olufanele okumele lufakwe ocwangingweni. I-PPP ivumela ukucubunguleka okunzulu nokucacisayo bese isiza ekugxiliseni nokwenza ngcono ukuthathwa kwesinqumo.

Ngenxa yalomgudu, iEIA izobe ivulelekile futhi isobala emphakathini kuthi wonke amal&APs abhalisile aziswe njalonjalo ngendlela ngokwenzakalayo emgudwini wonke. Konke okubalulwe ngamal&APs kumele kubhalwe phansi ngokuphelele, kucutshungulwe futhi kuphenduleke kwiEIA.

Imisebenzi ye PPP:

Umpakathi uyaminywa ukuba ubhalise njengama I&APs nokuthi ubambe iqhaza kwiPPP nge:

- Zaziso kwezokusakaza ulwazi ezifakwe emaphephandabeni
- Ukusabalaliswa kwe BID
- Amabhodi ezaziso asendaweni yeprojecti
- Izinsuku Ezivulekele Umpakathi/Imihlangano Yeqembu Eliqavile (njengoba kudingeka)
- Ukuthunyelwa kokuphawula mayelana nezaziso ezisezinkundleni zokuxhumana, kuma BID, emiQulwini eWumhlahlandlela Wokuqoqa Kwezimvo kanye Nokucwangingwa Kwemithelela

Ungalibamba kanjani iqhaza:

Amaqembu Abathintekayo Nabafisa Ukubambiqhaza angathumela izimvo zawo ezibhalwe phansi ahambisane namagama awo, imininingwane yokuxhumana kanye nokubalula iqhaza eliqondile elingaba ngelebhizinisi, lwezimali, lwalowomuntu noma elinye iqhaza angaba nalo esicelweni, azithumele ngeposi noma nge-email ziye ku:

Sizokwazisa ngezinsuku kanye nezindawo zanoma yimiphi imihlangano ezobanjwa ngesikhathi sokuxoxisana nomphakathi.

Uma ufisa ukuphakamisa nanoma yiziphi zingqinamba nezimvo ezimayelana neprojecti ehlongozwayo, noma uma ungathanda ukubhalisa njenge I&AP, uyacelwa ukuba uthintane nehhovisi lokubambiqhaza komphakathi emininigwaneni engenhla.

UKUBAMBIQHAZA KOMPHEKATHI - IMINININGWANE YOKUXHUMANA	
Abantu Okuxhunyanwa nabo:	Gerda Bothma 011 803 5726
I-email:	gerdab@gcs-sa.biz
Ikheli Leposi:	PO Box 2597 Rivonia Johannesburg 2128
	

Igxathu Elilandelayo:

Umbiko Osalungiswa We-Scoping Report, ochaza kabanzi ngeprojecti, izimo eziyisisekelo zendawo ethintekile kanye nemithelela engaba khona ehlonziwe, izotholakala ukuze ibuyekwezwe ngumphakathi kusukela zingu-24 kuLwezi 2023 kuze kube ziyi-16 kuMasingana 2024.

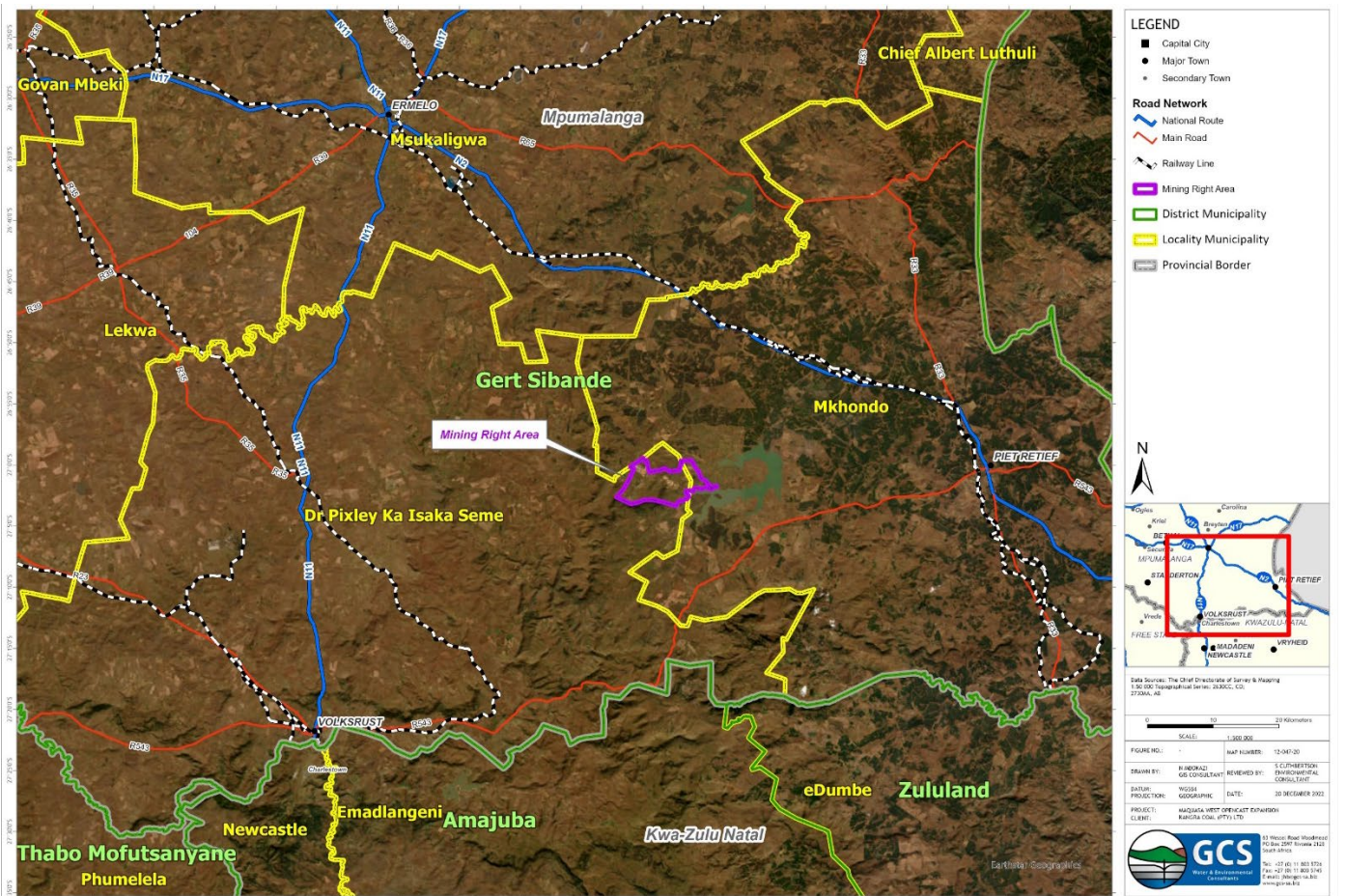
Lo mbiko uzophinde uchaze ukuthi i-EIR izobhekana kanjani nokukhishwa kanye nokukhathazeka okuvezwe phakathi nenqubo yokuhlola.

Amakhophi ombiko ayatholakala ukuze abuyekwezwe kanje:

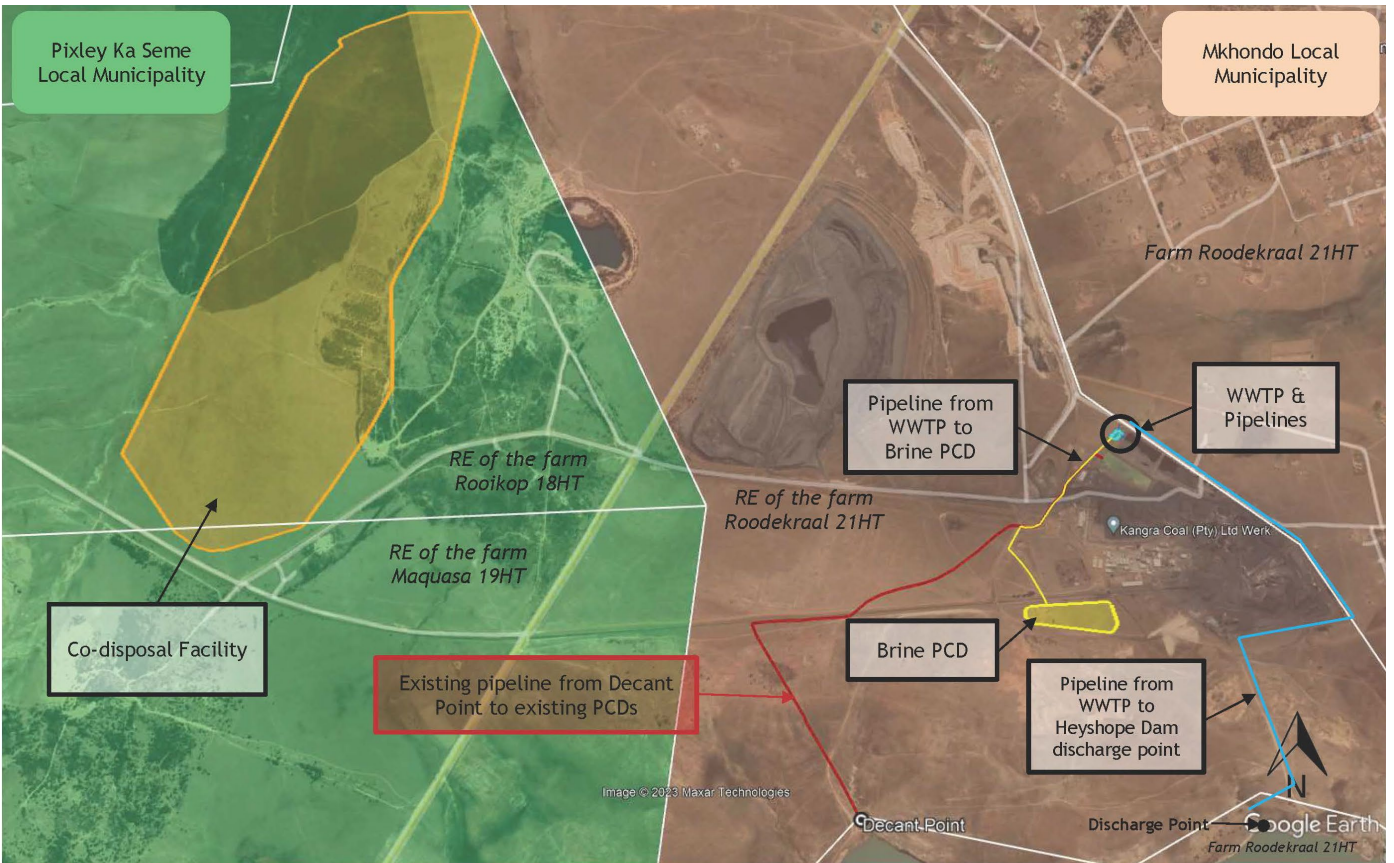
- **Amakhophi Aphrintiwe:**
 - Piet Retief Library, 10B Retief Street, Piet Retief;
 - Maquasa East Security Office, Maquasa East Mine, Driefontein;
 - Thusong Service Centre, Driefontein Community.
- **Ikhophi ye-elektroniki:**
 - <https://www.gcs-sa.biz/public-documents/>

UYACELWA UKUBA UQAPHELE


Njengokwezimfuno zoMthetho Wokuvikelwa Kolwazi Lwabaniniyo (POP), uMthetho 14 ka2013, uyaziswa lapha ukuthi ungakwazi ukusebenzisa ilungelo lakho ngokuthi ulushiye noma uphume ohlwini Lwabathintekayo Nabafisa Ukubambiqhaza (I&AP). Uma ukhetha ukuqhubeka njengengxenywe yohlu lweI&AP yaleprojecti, lokho kuyothathwa ngokuthi uvumile ukuba yingxenywe yohlu nokuthi imininingwane yakho iyokwazi ukuthi ibonwe nanoma yimuphi umsebenzi weGCS osebenza emgudwini wokubambiqhaza komphakathi. Bonke lababasebenzi bayavuma ukuthi angeke basebenzise lolulwazi lomuntu kunoma yisiphi isizathu, ngaphandle kokuthola imvume kulowomuntu ofanele. Kanjalo-ke, ngokubambiqhaza kulomgudu, uyavuma ukuba kusetshenziswe imininingwane yokuxhumana nawe kanye nokuphawula kwakho kusetshenziselwe imigudu yokugunyazwa neyokuthola imvume/ilayisense njengoba kudinga imigomo.



Umboniso 1: Ibalazwe Lendawo Yesiza kanye Nemingcele YeSifunda



Umboniso 2: Ukuma Kwendawo yeprojecti ehlongozwayo

		Kangra Coal (Pty) Ltd Piet Retief, Mpumalanga Umqulu Owumgodla Wolwazi Ifomu Lama I&AP Lokuphawulela Nokubhalisa GCS Ref No: 22-0161			
Igama:		Isibongo:			
Inhlangano/iqhaza lakho:					
Ikheli leposi/lendawo ohlala kuyo					
	Indawo:		Ikhodi:		
Imininingwane yokuxhumana	Ucingo:	()			
	Isikhahlamezi:	()			
	Umakhalekhukhwini:	()			
	Iemail:				
Uyacelwa ukuba ufake umaka ongo X ukuze ubalule ukuba ngabe ungathanda ukubambiqhaza emgudwini:					
Yebo, Ngingathanda ukubambiqhaza emgudwini nokuthi ngaziswe ngokuqhubekayo					
Cha, Angithandi ukubambiqhaza futhi angifisi ukuthola ulwazi ngaleprojecti					
Uhlelo lokuxhumana engingaluthokozela	I email		Skhahlamezi		Iposi
Usuku ophawule ngalo	(DD / MM / YYYY)				
Uyacelwa ukuba ubalule izingqinamba, okuphawulayo nokukuthintayo mayelana neprojecti ehlongozwayo					
Uyacelwa ukuba udalule ukuthi yimuphi umkhakha ongathanda ukuthola kuwo ulwazi oluthe xaxa					
Uyacelwa ukuba ubalule imininingwane yokuxhumana yanoma iyiphi il&AO ocabanga ukuthi kumele kuxhunyanwe naye					
Igama:		Isibongo:			
Ucingo:	()	Isikhahlamezi:	()		
Makhalekhukhwini:	()				
I email:					
Ukuze ubhaliswe njenge I&AP yaleprojecti, thumela ifomu lokubhalisa ngesikhahlamezi, ngeposi, noma nge email liye ku Gerda Bothma ku: Ucingo: (011) 803 5726 I-email: gerdab@gcs-sa.biz Iposi: PO Box 2597, Rivonia, 2128					

