



63 Wessel Road, Rivonia, 2128 PO Box 2597, Rivonia, 2128 South Africa
Tel: +27 (0) 11 803 5726 Fax: +27 (0) 11 803 5745 Web: www.gcs-sa.biz

TOKOMANE E MABAPI LE TLHAHISOLESERING YA BOITSHETLEHO BA DITABA

- KOPO YA TUMELLO YA TSA TIKOLOHO BAKENG SA:**
- 1. TOKELO YA HO RAFA YA SOUTHERN FREE STATE (SOFS) (FS 10005 MR)**
Referense ya DMPR: FS-00040-MR/11
LE
 - 2. TOKELO YA HO RAFA YA BEATRIX (FS 10047 MR (FS 081 MR))**
Referense ya DMPR: FS-00093-MS/102

REF. YA GCS NO: 25-0019

MORERO WA TOKOMANE

Morero wa tokomane ena ke ho neha Batho ba Anngweng hape ba nang le Kgahleho tlhahisoleseding e mabapi le fetisa bong le ho kopanya Ditokelo tsa ho Rafa ka hara Freistata.

Sepheo sa tokomane ena ke:

- Ho o mema hore o tle o nke karolo le ho ingodisa jwalo ka Motho ya Anngweng hape ya nang le Kgahleho (I&AP).
- Ho fana ka tlhahisoleseding mabapi le dikopo tse sisintsweng.
- Ho bontsha ka moo Batho ba Anngweng hape ba nang le Kgahleho ba ka bang le seabo tshebetsona, ba fumane tlhahisoleseding, ba hlahise ditaba, le ho tshwaela.

TLHALOSO YA PROJEKE

Neo Uranium Resources South Africa (Neo Energy), setheo se ka tlasa Neo Energy Metals, se fumane kananelo ya bohlokwa ho tswa Bankeng ya Risefe ya Afrika Borwa ho tswela pele ka phihlelo ya tjhafo ya Beatrix 4 ya Sibanye-Stillwater. Ho tshetsa phihlelo ena, Sibanye-Stillwater e tshwanetse ho phetha diketsahalo tse latelang:

- Ho fetsetsa bong ba Tokelo ya ho Rafa ya Southern Free State (SOFS) (FS 10005 MR), eo ha jwale e tshwerweng ke Witwatersrand Consolidated Gold Resources (Wits Gold), ho ya ho Sibanye Gold Proprietary Limited (Sibanye Gold).

- Ho kopanya karolo ya Tokelo ya ho Rafa ya Sibanye Gold Beatrix (FS 10047 MR (FS 081 MR)) le Tokelo ya ho Rafa ya SOFS (FS 10005 MR).
- Ho fetisa Tokelo e setseng ya ho Rafa ya Beatrix (FS 10047 MR (FS 081 MR)) ho tswa ho Sibanye Gold ho ya ho Neo Energy.

Re kopa hore le ele hloko hore tshebetso tse na tsamaiso ha di kenyelletse diphelelo dife kapa dife ho tshebetso tsa ho rafa tse ntseng di le teng kapa meralo ya motheo e amanang le hoo. Mesebetsi yohle ya ho rafa le meralo ya motheo e tshetsang e tla nne e tswela pele jwalo ka ha e ne e dumelletsewe pejana.

SEBAKA

Tokelo ya ho Rafa e ntseng e le teng ya Witwatersrand Consolidated Gold Resources (Wits Gold) SOFS (MR) (FS 10005 MR) e mane Seterekeng sa Makgistrata wa Freistata sa Ventersburg, Theunissen le Winburg. Tokelo ya ho Rafa e sebakeng se ka etsang dikilometara (km) tse 6 ka borwa ho Virginia, tse 12 ka borwa ho Theunissen le tse 40 ka borwa ho Theunissen, Masepaleng wa Selehae wa Masilonyana le Matjhabeng. Sheba Setshwantsho sa 1.

Tokelo ya ho Rafa e ntseng e le teng ya Beatrix MR ya Sibanye Gold Proprietary Limited (Sibanye Gold) (FS 10047 MR (FS 081 MR)) e mane Seterekeng sa Masepala sa Freistata sa Theunissen le Ventersburg. Tokelo ya ho Rafa e sebakeng se ka

etsang dikilometara (km) tse 25 ka borwa ho Theunissen, 27 ka borwa ho Virginia le 25, 43 ka borwa ho Welkom, Masepaleng wa Selehae wa Masilonyana le Matjhabeng. Sheba Setshwantsho sa 2.

DIKOPO BAKENG SA TUMELLO YA TSA TIKOLOHO

Tokelo ya ho Rafa ya SOFS (FS 10005 MR)

Kopo ena ya Tumello ya tsa Tikoloho (EA) ka mokgwa wa Tekolo ya Motheo (BA) e akarelletsa ho kopangwa ha karolo ya Tokelo ya ho Rafa ya Sibanye Gold Beatrix (FS 10047 MR (FS 081 MR)) ka hara Tokelo ya ho Rafa ya Wits Gold SOFS (FS 10005 MR), ho ntse ho le jwalo e fetisetswa le ho Sibanye Gold. Sheba Setshwantsho sa 3.

Tokelo ya ho Rafa ya Beatrix (FS 10047 MR (FS 081 MR))

Kopo ena ya Tumello ya tsa Tikoloho, ka mokgwa wa Tekolo ya Motheo e akarelletsa ho kopangwa ha karolo ya Tokelo ya ho Rafa ya Sibanye Gold Beatrix (FS 10047 MR (FS 081 MR)) ka hara Tokelo ya ho Rafa ya Wits Gold SOFS (FS 10005 MR). Tokelo ya ho Rafa ya Sibanye Gold Beatrix (FS 10047 MR (FS 081 MR)) (kopo ena) e tla re ka mora moo ya kenyelletsa feela moralo wa motheo o latelang:

- Tjhafo ya Beatrix 4.
- Polante ya Saense e sebetsang ka Methale.
- Fasilithi ya Polokelo ya Dihlahiswa tsa Tshebetso ya Diminerale
- Moo ho Lahlelwang Majwe.
- Tshebetso tsa Tlhwekiso ya Metsi a Dikgwerekgwere
- Matamo a Taolo ya Tshilafatso le Matamo a Moyafatso.

Tokelo ya ho Rafa ya Sibanye Gold Beatrix (FS 10047 MR (FS 081 MR)) e tla be e se e fetisetswa ho Neo Energy. Sheba Setshwantsho sa 4.

BOEMO BA MOLAO

GCS Environment South Africa (Pty) Ltd (GCS) e kgethuwe ho ba Mosebeletsi wa Tekolo ya Motheo bakeng sa ho sebetsana le dikopo tsa Tumello ya tsa Tikoloho ka ho ya ka Molao wa Naha wa Tsamaiso ya Tikoloho, 1998 (Molao wa No. 107 wa 1998) (NEMA), le melawana e amanang le ona.

Tumello ya tsa Tikoloho

Tumello ya tsa Tikoloho (EA) e a hlokeha tlasa Molao wa Naha wa Tsamaiso ya Tikoloho (NEMA) bakeng sa mosebetsi o latelang:

GN R 983:

Mosebetsi wa 21 D: Mosebetsi ofe kapa ofe o kenyelletsang tshebetso ya mosebetsi oo e hlokanang ho fetolwa kapa phapang ho tokelo kapa tumello ka ho ya ka Karolo ya 102 ya Molao wa Diminerale

le Ntshetsopele ya Mehlodi ya Petroliamo, ekasitana le mosebetsi ofe kapa ofe o sebetsang o leng ka hara Tsebiso ya Ngodiso kapa Tsebiso ya Ngodiso 3 ya 2014, e hlokehang bakeng sa phetolo eo.

BOLAODI BO FUWENG MATLA

Bolaodi bo fuweng matla bo ikarabelang tsamaisong le tabeng ya ho kenya tshebetso melao e tshwanetseng ke Lefapha la Diminerale le Mehlodi ya Petroliamo la Freistata (DMPR).

TEKOLO YA MOTHEO KE ENG

Tekolo ya Motheo e tsamaisana le tshebetso ya tekolo ya tikoloho e laetsweng bakeng sa mosebetsi e lebelletsweng ho ba le dikgahla tse nyane kapa tse kgethetsweng sebaka se itseng sa tikoloho e leng tse ka fokotswang ntle le tlhokeho e felletseng ya Tekolo ya Sekgahla sa Tikoloho. Tshebetso ena e laolwa tlasa Karolo ya 24 ya NEMA mme e sebetsa hodima mosebetsi e boletsweng Molawaneng wa Tsebiso ya Mmuso wa GN R 983.

Pele mosebetsi ofe kapa ofe o ngodisitsweng o ka qala, ho tshwanetswe hore ho fumanwe Tumello ya tsa Tikoloho (EA) ho tswa bolaoding bo fuweng matla bo tshwanetseng, mme mona ke DMPR ya Freistata.

TSHEBETSO YA TEKOLO YA MOTHEO

Tshebetso ya Tekolo ya Motheo e kenyelletsa mekgahlelo e mmalwa ya bohlokwa e etsang bonnete ba hore ho latelwa ditlhoko tsa molao le ho thusa ka ho nka karolo ha setjhaba. Tshebetso ena e kgutsufaditswe mona ka tlase mme e bontshwa Setshwantshong sa 5:

Mokgahlelo wa 1: Tsebiso ka Bolaodi

Kopo ya semmuso ya Tumello ya tsa Tikoloho e ile ya romelwa ho DMPR ka Motsheanong 2025 bakeng sa ditokelo tsa ho rafa tse latelang:

- Tokelo ya ho Rafa ya Witwatersrand Consolidated Gold Resources (Wits Gold) - SOFS (FS 10005 MR), Referense ya DMPR: FS-00040-MR/11.
- Tokelo ya ho Rafa ya Sibanye Gold Proprietary Limited (Sibanye Gold) - Beatrix (FS 10047 MR); e pejane e neng e le FS 081 MR), Referense ya DMPR: FS-00093-MR/102.

Dikopo tsena di ile tsa etsa hore ho qalwe ka molao tshebetso ya Tekolo ya Motheo tlasa NEMA.

Mokgahlelo wa 2: Tshebetso ya Bonkakarolo ba Setjhaba

Bonka-karolo ba setjhaba ke mohato wa bohlokwa wa tshebetso ya Tekolo ya Motheo mme e etswa ka

ho latela Kgaolo ya 6 ya Molawanaw a Tsebiswa ya Mmuso wa GN R 982. E etsa hore ho be le bonnete ba hore ho sebeletswa pepeneneng, ho akaretswa batho mme o na le tshebedisano e utlwahalang le Batho ba Anngweng hape ba nang le Kgahleho.

Mohato wa 1: Tsebiswa le Ho Hlwauwa ha Taba

- Batho ba Anngweng hape ba na le Kgahleho ba tla tsebiswa ka projeke e sisintsweng ka dikgokahano tse tobileng le ka ditsebiswa tsa setjhaba.
- Ho tla fanwa ka Tokomane e mabapi le Tlhabisoleseding ya Boitshetleho ba Ditaba, e leng e fanang ka kakaretso ya Projeke, mmapa wa sebaka, foromo ya ngodiso/ditshwaelo.
- Batho ba Anngweng hape ba nang le Kgahleho ba tla kotjwa ho ngodisa kgahleho ya bona hore ba tle ba fumane tlhabisoleseding e eketsehileng.

Mohato wa 2: Hlahlobo ya Moralo wa Ditlaleho tsa Tekolo ya Motheo

- Ho tla ngolwa le ho bokellwa Tlaleho ya Ditshwaelo le Dikarabo (CRR) e tla kenyelletsa ditlhabiso tsohle tse fumanweng ho tswa ho Batho ba Anngweng hape ba nang le Kgahleho Mohatong wa 1.
- Ditlaleho tsa Moralo wa Tekolo ya Motheo (DBAR) le Mananeo a Tsamaiso ya Tikoloho (EMPr) di tla ntshiwa bakeng sa nako ya tlwaelo ya tlhahlobo ya setjhaba ya matsatsi a 30 ho tloha ka la 30 Phupjane ho ya ho la 30 Phupu 2025.
- Ditokomane di tla fumaneha ho ka hlahlojwa dibakeng tsa setjhaba tse kgethuweng le webosaeteng ya Sibanye le GCS. Mona o mengwa hore o hlahlobe Ditlaleho tsa Moralo wa Tekolo ya Motheo (di-DBAR) e be o romela maikutlo a hao ka nako ya ho fana ka maikutlo a setjhaba, e tla qala ho tlla ka la 14 Pudungwana 2025 ho ya ho la 8 Pherekong 2026. dibakeng tse latelang:
 - Meloding Public Library, Meloding Street, Virginia.
 - Virginia Public Library, Virginia Garden Circle.
 - Welkom City Library, Welkom Central, Welkom.
 - Theunissen Public Library, Le Roux Street, Pienaar Ave leTheunissen.
 - Portal ya data ya mahala ya Sibanye: <https://ulwazi.datafree.co/#/pub/login>
 - Webosaete ya GCS: <https://www.gcs-sa.biz/public-documents/>

Ditshwaelo tse ngotsweng le ditaba tse tiiseditsweng di tshwanetswe ho romelwa ho GCS ho eso fete 8 Pherekong 2026.

- Ho hlophisitswe dikopano tse tla neha setjhaba monyetla wa ho fumana tlhabisoleseding e

eketsehileng ka Projeke le ho nka karolo tshebetsona. Mona setjhaba se mengwa ho kenela e nngwe ya dikopano tsa setjhaba tse latelang:

Letsatsi: Laboraro, 26 Pudungwana 2025

Nako: 14h00

Sebaka: Ferdie Meyer Hall (Welkom Central)

Mohato wa 3: Ho Romelwa ha Dipehelo tsa Makgaolakgang tsa Tekolo ya Motheo

- Ditshwaelo tsohle tse fumanweng ka nako ya tlhahlobo ya setjhaba di tla elwa hloko tokisetsong ya Ditlaleho tsa Makgaolakgang tsa Tekolo ya Motheo.
- Ditlaleho tsa Makgaolakgang tsa Tekolo ya Motheo (di-FBAR) le Mananeo a Tsamaiso ya Tikoloho (di-EMP) a makgaolakgang le Tlaleho ya Ditshwaelo le Dikarabo (di-CRR) e ntlafaditsweng, di tla be di se di romelwa ho DMPR bakeng sa ho ya elwa hloko le ho etswa geto ka tsona.
- Batho bohle ba Anngweng hape ba nang le Kgahleho ba leng ho dataise ya Projeke ba tla tsebiswa ka ho romelwa ha Ditlaleho tsa Makgaolakgang tsa Tekolo ya Motheo (di-FBAR) DMPR le hape ha DMPR le se le entse diqeto ka di-Ditlaleho tsa Makgaolakgang tsa Tekolo ya Motheo (di-FBAR).

Mohato wa 4: Tsebiswa ka Ditumello ka tsa Tikoloho le Nako ya Boipiletso

- Hang ho ba ho fanwe ka Ditumello ka tsa Tikoloho (di-EA) ke DMPR, Batho bohle ba Anngweng hape ba nang le Kgahleho ba tla tsebiswa ka diphetho tseo.
- Ditsebiswa di tla kenyelletsa dintlha tse mabapi le nako ya semolao ya boipiletso le tataiso ya ka moo o ka etsang boipiletso ka teng, ka ho ya ka dipehelo tse tshwanetseng tsa Molawana.

Mokgahlelo wa 1

Romela Diforomo tsa Kopo ho DMPR
Kananelo ya Bolaodi



Mokgahlelo wa 2: Mehato ya 1 le 2

Ho Qalwa le ho Phatlalatswa ha Ditshebeletso tsa
Tekolo ya Motheo (BA)
Nako ya Ditshwaelo (14 Pukungwana ho ya ho la 8
Pherekong 2026)
Ho elwa hloko ha ditshwaelo tse fumanweng mme
ho qetellwa ditlaleho
Ho romelwa ha di-FBAR ho DMPR (15 Pherekong
2026)



Mokgahlelo wa 2: Mehato ya 3 le 4

DMPR e Amohela ditlhaliso tsa di-FBAR
Diqeto le Ditsebisano tsa DMPR
Mokgahlelo wa Boipiletso

**Setshwantsho sa 5: Ditshwantsho tse bontshang
Tshebetso ya Tekolo ya Motheo e
tshwanetseng ho latelwa**

HO INGODISA JWALO KA MOTHO YA ANNGWENG HAPE YA NANG LE KGAHLEHO

Ka ho ingodisa ho ba Motho ya Anngweng hape ya nang le Kgahleho, o tla kenyelletswa databeising ya bakgathatema ba Projeke mme o fumane tlhahisoleseding e eketsehileng hore o tshwaele. Ditshwaelo tsa hao di tla etsa bonnete ba hore ditaba tsohle tse tshwanetseng di a kenyelletswa hape di a rarollwa.

Re kopa hore o tlatse mme o romele pampitshana e kenyelleditsweng ya ngodiso / tshwaelo kapa o iteanye le ba GCS ha o batla ho hlahisa maikutlo kapa ho ingodisa Projekeng. Batho ba Anngweng hape ba nang le Kgahleho ba ratang ho nka karolo ka ho fana ka ditshwaelo, kapa ba batlang ho fumana tlhahisoleseding e eketsehileng, ba kotjwa ho iteanya le:

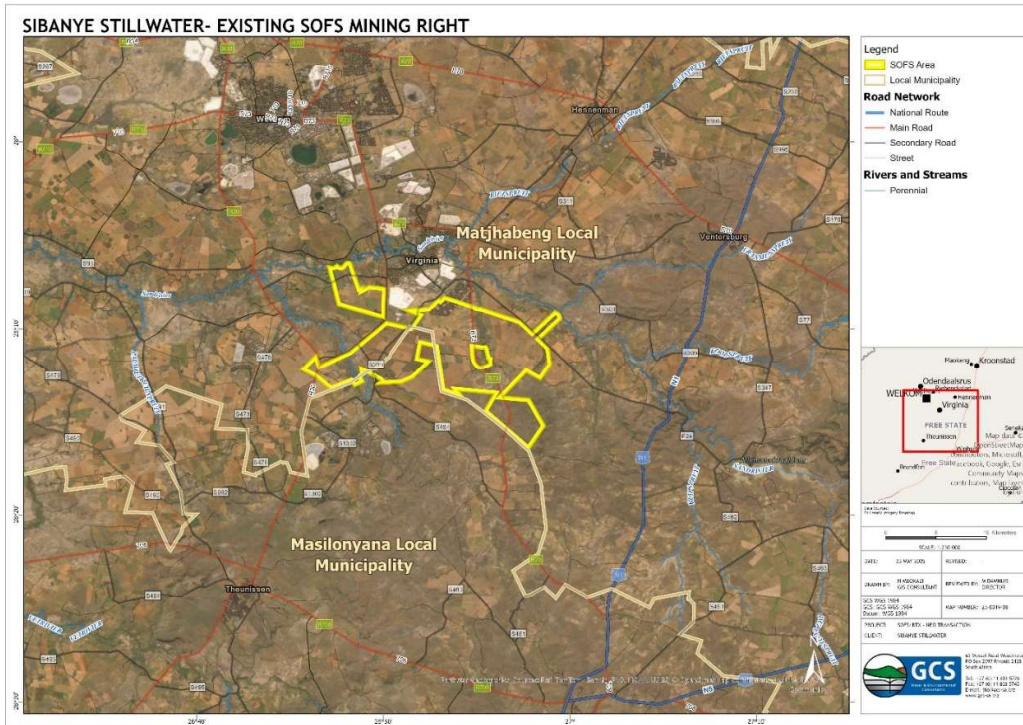
GCS Environment South Africa (Pty) Ltd
Kelo hlokoeng ya: **Anelle Lotter / Luyanda
Macheke**

Mohala: +27 (0)11 803 5726

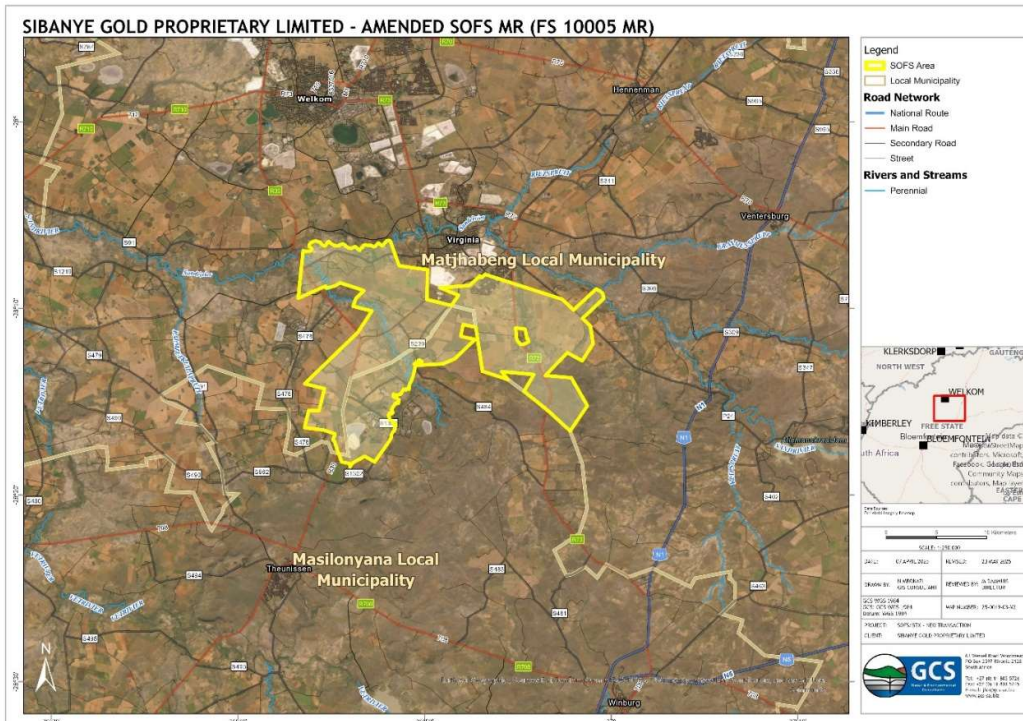
Fekse: +27 (0)11 803 5232

Emeile: ppp@gcs-sa.biz / anelle@gcs-sa.biz /
luyandam@gcs-sa.biz

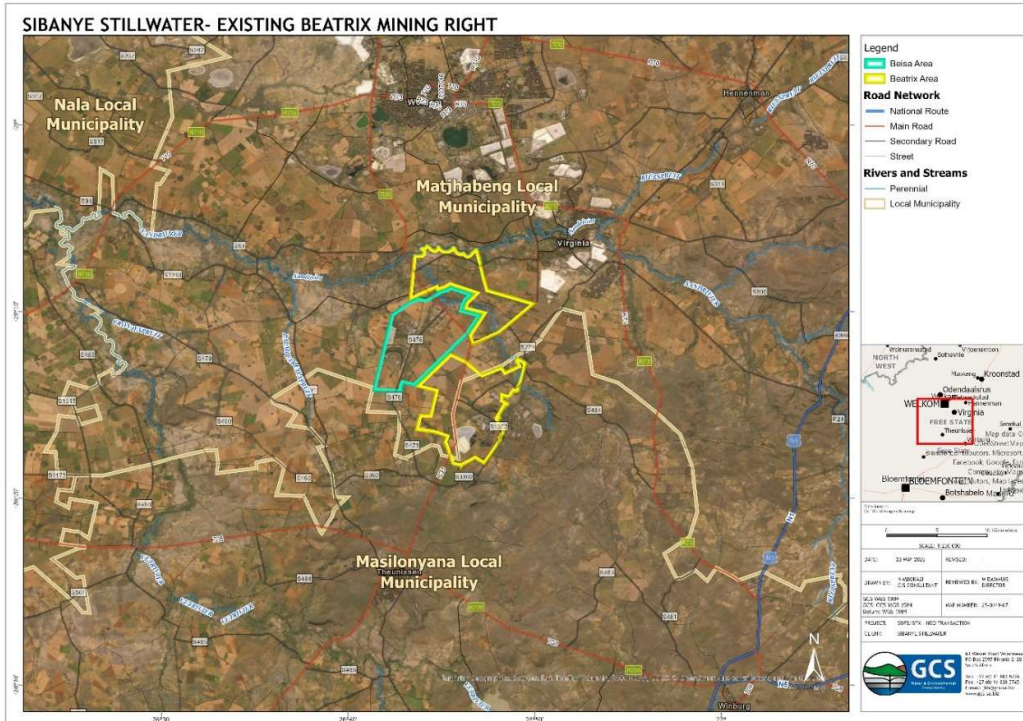
Aterese ya Poso: PO Box 2597, Rivonia,
Johannesburg, 2128



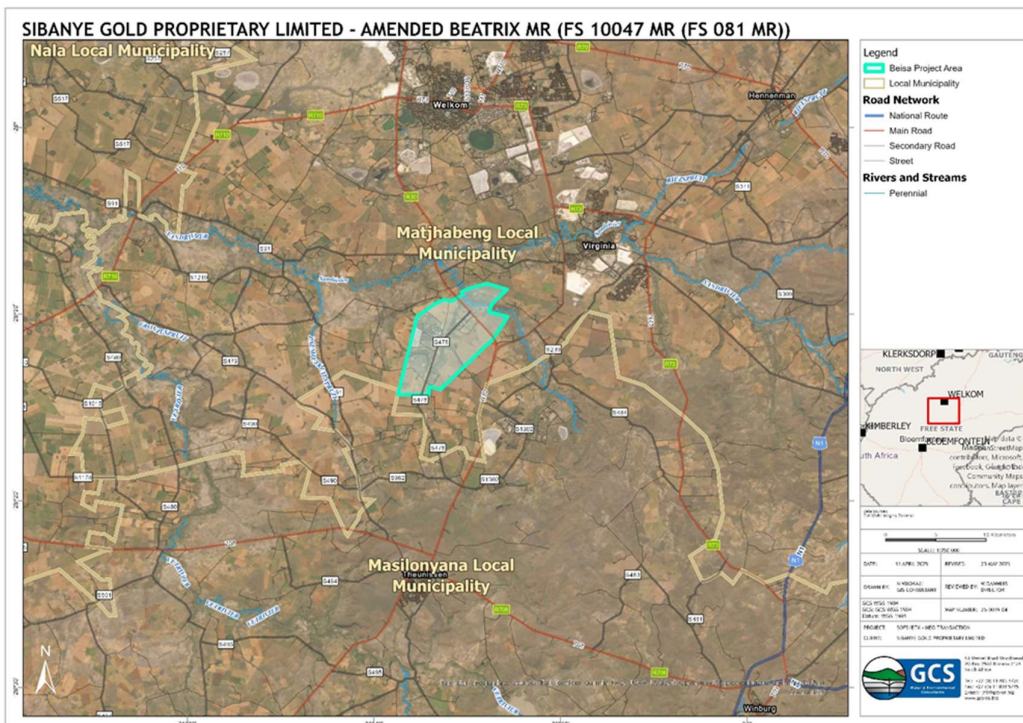
Setshwantsho sa 1: Polane ya Sebaka e bontshang Tokelo ya ho Rafa e ntseng e le teng ya Wits Gold SOFS (FS 10005 MR)



Setshwantsho sa 3: Polane ya Sebaka e bontshang Tokelo ya ho Rafa e fetotsweng ya SOFS (FS 10005 MR)



Setshwantsho sa 2: Polane ya Sebaka e bontshang Tokelo ya ho Rafa e ntseng e le teng ya Sibanye Gold Beatrix (FS 10047 MR (FS 081 MR))



Setshwantsho sa 4: Polane ya Sebaka e bontshang Tokelo ya ho Rafa e fetotsweng ya Beatrix (FS 10047 MR (FS 081 MR)) e lokelwang ho fetisetwa ho Neo Energy

KOPO YA TUMELLO YA TSA TIKOLOHO BAKENG SA:
1. TOKELO YA HO RAFA YA SOUTHERN FREE STATE (SOFS) (FS 10005 MR)
 Referense ya DMPR: FS-00040-MR/11
 LE
2. TOKELO YA HO RAFA YA BEATRIX (FS 10047 MR (FS 081 MR))
 Referense ya DMPR: FS-00093-MS/102

REF. YA GCS NO: 25-0019

FOROMO YA NGODISO LE TSHWAELO

Batho ba Anngweng hape ba nang le Kgahleho ba ingodisitseng ba tla tsebiswa ka ho ntseng ho etsahala ka mokgwa oo ba tla ikgethela ona wa dikgokahano (SMA, emeile). Re kopa hore o ingodise ho ba Motho ya Anngweng hape ya nang le Kgahleho e be o fana ka ditshwaelo ka ho romela foromo ena, kapa ka ngollano, ho dintlha tsa bao o ka iteanyang le bona, tse mona ka tlase:

GCS Environment South Africa (Pty) Ltd
Kelo hlokong ya: Anelle Lotter / Luyanda Macheke
 Mohala: +27 (0)11 803 5726
 Fekse: +27 (0)11 803 5232
 Emeile: ppp@gcs-sa.biz / anelle@gcs-sa.biz / luyandam@gcs-sa.biz
 Aterese ya Poso: PO Box 2597, Rivonia, Johannesburg, 2128

Ke kopa hore le nngodise ka tlwaelo jwalo ka Motho ya Anngweng hape ya nang le Kgahleho	Ee	Tjhe
Ke tla rata ho fumana ditsebiso tsa ka ka	Emeile	SMS

Re kopa hore o bolele mokga oo o o emetseng mme hape o fane le ka lebitso

Lefapha la Mmuso	
Masepala	
Baahi	
Mokgatlo o seng Tlasa Mmuso	
Kgwebo	

Ha o le monga mobu kapa motho ya ahileng mobung, re kopa hore o bolele hore ke (di)polasi efe le (di)karolo efe eo o dulang ho yona

Monga mobu	
Motho ya ahileng mobung	

Re kopa hore o tlatse dintlha tsa hao mona ka tlase bakeng sa databaseise ya Projeke

Sehlooho, Mabitso Botlalo ka	
Boemo	

